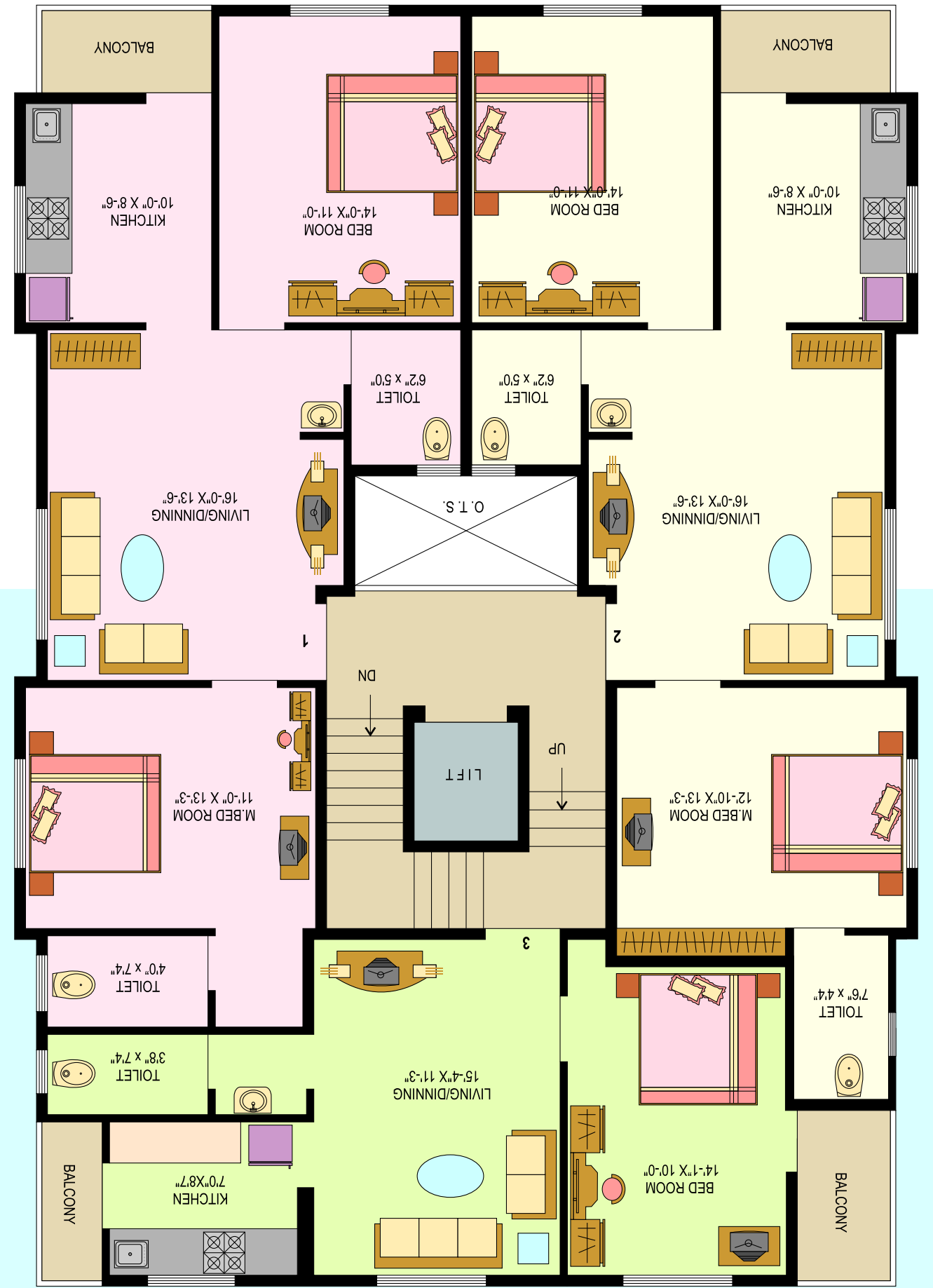




## Typical Floor Plan



- 24 HRS WATER SUPPLY ■ GENERATOR/INVERTOR BACKUP FOR LIFT
- ATTRACTIVE ELEVATION ■ EARTHQUAKE RESISTANT STRUCTURAL DESIGN

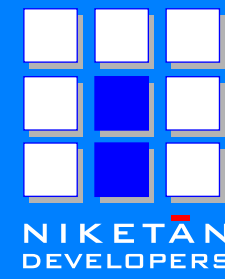
- EXTERIOR WALLS
- CLASSIC WEATHER PROOF PAINT ON
- LIME WASH IN ALL ROOMS
- ACCESSORIES IN ALL BATHROOMS
- CONCEAL PLUMBING WITH CHROME PLATED WITH MARBLE SILL
- POWDER COATED ALUMINIUM SLIDING WINDOWS
- ALL DOOR WITH BOTH SIDE LAMINATES
- CONCEAL WIRING WITH MODULAR SWITCHES
- SEPARATE POINT FOR WATER FILTER
- 2FT DADO CERAMIC TILES FOR KITCHEN WITH SS SINK
- GRANITE PLATFORM FOR KITCHEN
- BATHROOM TILES UP TO 7 FEET
- VITRIFIED TILES IN ALL ROOMS
- 6 FEET WINDOWS IN ALL BEDROOMS

## SPECIFICATIONS



**NIKETAN DEVELOPERS**  
Building Dream Homes

## Location Plan



**NIKETAN PRIDE**  
LUXURY HOMES AT DILIP NAGAR



### DEVELOPERS

**NIKETAN BUILDERS AND DEVELOPERS**  
1st Floor, Above Deep Super Store,  
Sai Krupa II, Nani Daman.  
CONTACT : Cell: +91 98981 18754, Tel.: +91 260 6451903

### Legal Advisor

SATISH MODASIA  
Daman.  
Tel.: (0260) 2254163

### Structural Designer

Rajesh Tandel  
ARCHI CONSULTANTS  
Vapi.  
M. 9824117624

### Architect

JAGDISH JANI AND ASSOCIATES  
Vapi.  
M. 9824418113

Individual flat interiors shown with Furniture / Fittings & Fixtures are indicative and are not part of actual amenities provided. Note: The information contained is subject to change by the developers and cannot form part of an offer or contract. The developer reserves the right to change the plans and specifications.

**2 BHK PREMIUM APARTMENTS**  
CROSS LANE NO.6, DILIP NAGAR, NANI DAMAN.